

Available in 15mm compression or push-fit

# ElectroScale®

## Scale reducer

Approved  
electrolytic  
limescale  
prevention



Telephone: 01242 546700 Email: info@adey.com  
[www.adey.com](http://www.adey.com)



Produced from recycled material

A carbon neutral company

Ref:MO5468



## Long-term limescale protection

*ElectroScale* has been designed to prevent limescale build-up in homes and small commercial properties. The product is a non-polluting electrolytic water conditioner. The electrolytic cell alters the crystal structure of the limescale as it passes through, making it less likely to stick to pipes or other surfaces. A 'fit and forget' solution, *ElectroScale* does not require an electrical power supply. Installation meets the requirements in Part L of the Building Regulations. This states that provision must be made to treat the feed water to water heaters and hot water circuit

of combination boilers to reduce the rate of limescale accumulation.

### Benefits

- Immediate long-term limescale protection
- WRAS approved
- Designed to last ten years
- No running costs
- Maintenance free
- Part L Building Regulation compliance
- Easy installation – Compression slip socket design
- Environmentally friendly
- Energy savings

## Technical specification

Connection: 15mm compression/push-fit  
 Material: Copper tube to BS EN 12449  
 Maximum working temperature: Cold feed only  
 Minimum working temperature: 1°C  
 Maximum working pressure: 12 bar at 20°C  
 Compression body length: 175mm  
 Push-fit length: 243mm  
 Diameter: 35mm

*ElectroScale* 15mm Compression ΔP  
 at 25.0 l/min = 62 mbar  
*ElectroScale* 15mm Push Fit ΔP  
 at 25.0 l/min = 89 mbar

## Installation

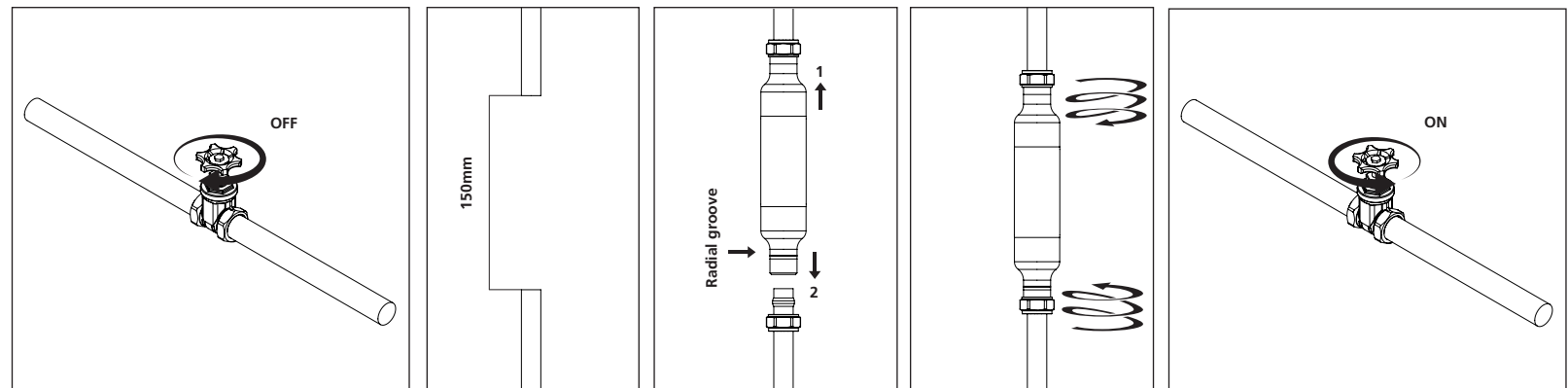
To achieve the best level of protection, install *ElectroScale* on the incoming water supply after the water meter and primary filter units (if installed). This ensures the whole property is protected. *ElectroScale* can be installed on both horizontal and vertical pipework.



### Compression installation

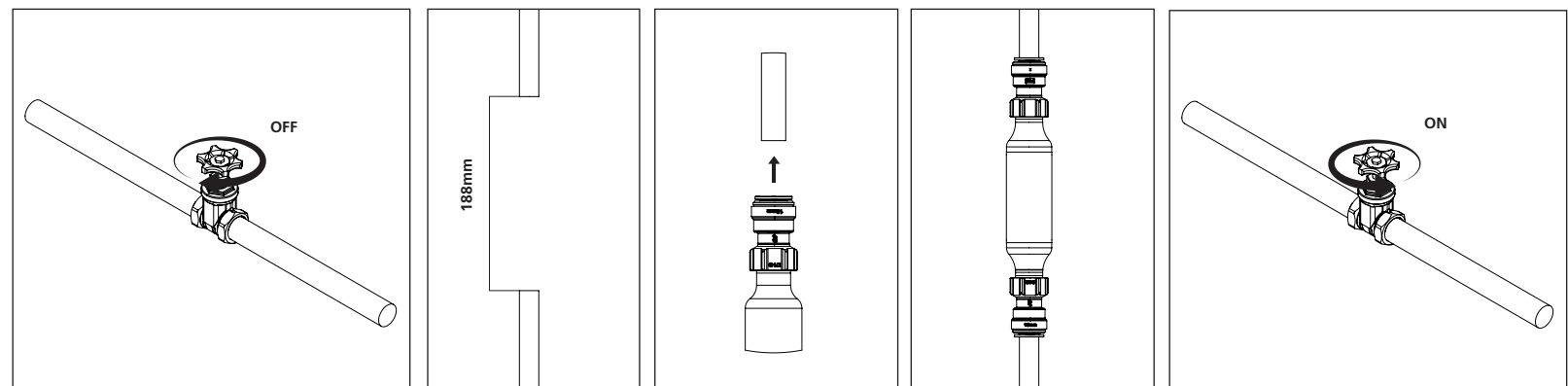
The slip socket design on the *ElectroScale* compression product makes it easy for retro-fit installations.

1. Turn-off water supply.
2. Cut-out 150mm section of pipe.
3. Install using the slip socket, which is the connection opposite the radial groove.
4. Tighten both compression nuts.
5. Reconnect water supply and check for leaks.



### Push-fit installation

1. Turn-off water supply
2. Select a section of pipework free of score marks and remove a 188mm section. Remove all burrs and sharp edges.
3. Install *ElectroScale* ensuring the pipes are pushed in as far as the pipe stops.
4. Reconnect water supply and check for leaks.



**Important** To maintain earth continuity in accordance with current IEE regulations, when required a suit able earth bonding cable should be fitted to the pipework to bypass the product. Refer to NICEIC 17th edition for more information. For information on hard water areas, please visit [www.adey/hardwatermap.com](http://www.adey/hardwatermap.com)