



Stainless UV



HOT WATER CYLINDERS

New Everflo Rapide+ with Integral Thermal Expansion

Stainless

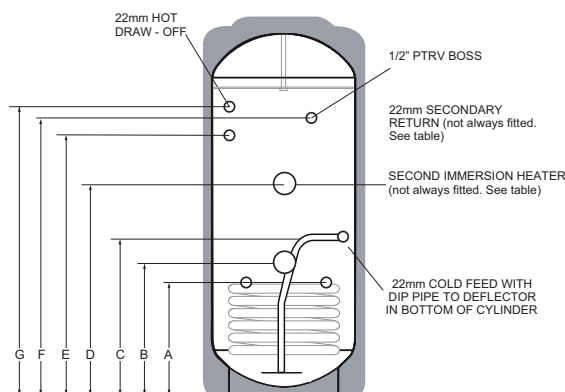


New Integral Thermal Expansion eliminates the need for an external expansion vessel, resulting in a faster more reliable installation.

The range includes both indirect and direct models of unvented hot water cylinder in capacities from 120 to 300 litres.

Indirect cylinders heat the water using a coil with the heat supplied from a conventional gas or oil boiler. They also feature a 3kW immersion heater as a back-up. Direct cylinders use a 3kW immersion heater to heat the water with a second 3kW immersion heater as back-up.

- Quicker and easier to install
- Cylinder self-pressurises as it fills
- Cost savings on other brands
- Overall installation uses up less space in an airing cupboard
- Duplex stainless steel for excellent corrosion resistance
- Mains pressure hot water for fast filling baths and powerful showers
- High flow-rate controls – ideal for multiple bathrooms
- Fast reheat and high insulation values resulting in higher efficiency

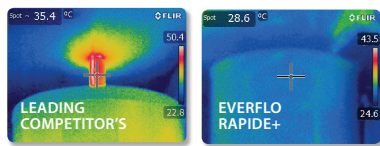


CODE	CAPACITY Litres	HEIGHT	DIA	A	B	C	D	E	F	G	ERP					
											Rating	Standing Loss (W)	Load Profile	AEC kWh/Year	Efficiency %	dB
INDIRECT CYLINDERS																
EXN150ERP	150	1183	550	345	385	455	N/F	N/F	805	837	B	55	-	-	-	-
EXN180 ERP	180	1367	550	375	415	490	N/F	N/F	989	1021	C	67	-	-	-	-
EXN210ERP	210	1557	550	375	415	490	N/F	1022	1055	1087	C	78	-	-	-	-
EXN250ERP	250	1802	550	410	450	530	972	1267	1300	1332	C	89	-	-	-	-
EXN300ERP	300	2072	550	410	450	530	1255	1519	1552	1584	C	93	-	-	-	-
DIRECT CYLINDERS																
EXD120ERP	120	997	550	N/F	244	184	532	N/F	619	651	C	-	M	1394	36.8	15
EXD150ERP	150	1183	550	N/F	244	184	632	N/F	805	837	B	-	M	1310	39.2	15
EXD180ERP	180	1367	550	N/F	244	184	732	N/F	989	1021	C	-	L	2468	40.0	15
EXD210ERP	210	1557	550	N/F	244	184	832	1022	1055	1087	C	-	L	2706	37.8	15

All dimensions are in mm and are of the cased unit. N/F = Not Fitted.

Side Hot Water Outlet

Reduced heat loss from top of cylinder



Immersion Heater with Dual Thermostat†

Faster response times for more efficient operation



Duplex Stainless Steel

Extremely durable with excellent corrosion resistance



Coil-in-Coil Heat Exchanger*

Large surface area provides fast heating of hot water



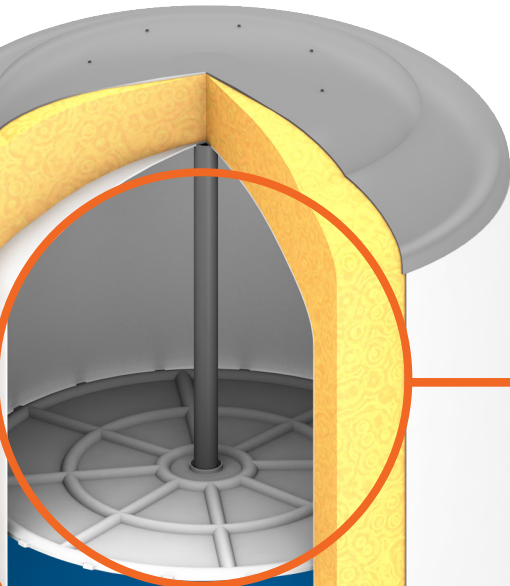
Integral Thermal Expansion

No external expansion vessel required for hot water circuit provides important savings:

TIME - Around 20 minutes on a retrofit installation

MATERIALS - Typically 2m of 22mm copper tube on top of several fixings and plumbing fittings

SPACE - takes up less room in the airing cupboard



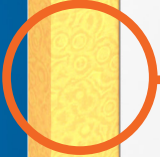
Swivel Connection T&P Valve

Fast and simple positioning for easier aligning with pipework



50mm of High Quality Insulation

Reduced heat loss for efficient operation



Cold Feed with Diffuser

Minimises mixing of hot and cold water



† 120L - 210L Indirect cylinders only have one
 * Indirect models only



Stainless UV

Everflo Cylinders

Unit 11 Capital Industrial Estate
Crabtree Manorway South, Belvedere
Erith, Kent DA17 6BJ

Sales Enquiries: 0208 3123720 Technical Helpline: 0330 999 0035

E-mail: sales@everflocontainers.co.uk

www.everflocontainers.co.uk



Stainless UV



**NEW
INTEGRAL THERMAL
EXPANSION**

HOT WATER CYLINDERS