



# Technical Performance and Specification Data

## APP Unvented Hot Water Cylinders With External Thermal Expansion

### COMPONENTS SUPPLIED WITH ALL CYLINDERS



**Inlet control set – with balanced Cold**  
3 bar PRV 6 bar expansion relief  
Spare part no: 025070 /CONTSETALT533



**Temperature & pressure relief valve**  
1/2" NPT x 15mm  
Spare part No: VALVETP1/2ALT



**Acetal tundish**  
15 x 22 mm  
Spare part no: TUNDPL15ALT



**External expansion vessel - DHW**  
150 litre units - 12 litre vessel  
Spare part no: EXPVESB12ALT  
180, 210 & 250 litre units - 18 litre vessel  
Spare part no: EXPVES18ALT  
300 litre units - 25 litre vessel  
Spare part no: EXPVESB24ALT

### COMPONENTS SUPPLIED WITH SELECTED CYLINDERS



**Two port valve**  
Spare Part No: VALVE2PORTH



**Immersion heater**  
Incoloy long life 3 kW immersion heater  
Spare part no: TS9 - DIRECT & INDIRECT  
Smart immersion: 026400



**Smart immersion heater**  
Incoloy long life 3 kW immersion heater  
Spare part no: 026400  
(lower immersion on direct models only)



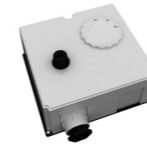
**External expansion vessel - Central heating**  
Under 250 litre units - 18 litre vessel  
Spare part no: 025007  
300 litre units - 25 litre vessel  
Spare part no: 025008



**Filling Loop**  
Spare part no: FLOOP2



**Circulating Pump**  
Spare part no: PUMPWYPERP



**Dual thermostat**  
Spare part nos: STATOVALALTP



**High limit thermostat**  
Spare part no: STATHIGHALT



**TP5000 - Programmable room thermostat**  
Spare Part No: PROGTP5000



**TP9000 - Two channel programmable room thermostat with DHW control**  
Spare Part No: PROGTP9000



**Auto By-Pass SPV30**  
Spare Part No: VALVEARV22

### FLOW RATES

Unvented cylinders are renowned for their ability to deliver fast flow rates. The diagram here illustrates the speed at which hot water can be heated and distributed reliably throughout the home.

